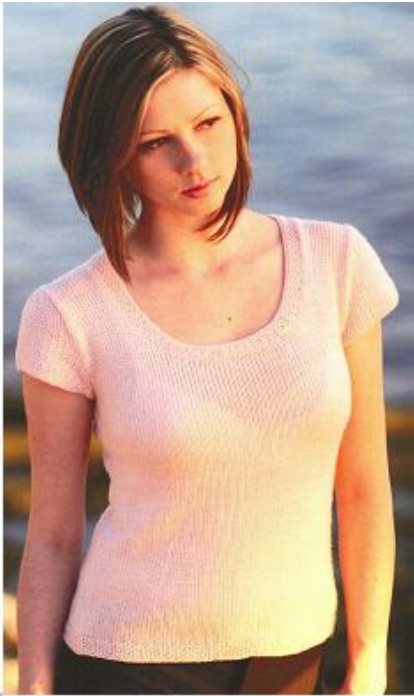


GATTO TEE

from the files of
Michelle Porter



NOT TO BE SOLD

GATTO TEE

Needful Yarns *WOOL GATTO*

Recommended for beginner knitters

FINISHED MEASUREMENTS

	Small	Medium	Large
Bust (approx):	81 cm/32 ins	89 cm/35 ins	97 cm/38 ins
Length from shoulder:	48 cm/19 ins	53 cm/21 ins	57 cm/22½ ins

Instructions are given for size Small. Any changes for larger sizes are written in parentheses. Where there is only one figure, it applies to all sizes.

MATERIALS

- 4 (4, 5) 50 g/1¾ oz balls (each approx 165m/181 yds) of Needful Yarns WOOL GATTO (100% wool)
- One pair 4mm (US 6) needles OR needles required to achieve correct tension.
- One pair 3.5mm (US 3) needles OR needles required to achieve correct tension.
- Yarn needle

TENSION

22 sts and 30 rows = 10 cm/4 ins with 4mm needles over St st
28 sts and 38 rows = 10 cm/4 ins with 3.25mm needles over seed stitch pattern.

STITCH PATTERN

Seed Stitch

Row 1 (RS): [K1, p1], repeat to end of row.

Row 2 (WS): [P1, k1], repeat to end of row.

Repeat rows 1 and 2 to form pattern.

BACK

With smaller needles cast on 90 (98, 106) sts.

First 3 rows: knit.

Next 8 rows: work in seed stitch pattern.

Change to larger needles.

Next row (RS): Knit.

Following row (WS): Purl.

These two rows form St st pattern.

Continue in St st until piece measures 7.5 cm/3 ins, ending with a WS row.

Waist Shaping

Next row (RS): Knit 19 (21, 23) sts, ssk, k to last 21 (23, 25) sts, k2tog,

knit 19 (21, 23) sts.

Work 3 rows even in St st.

Repeat last 4 rows 4 more times.

80 (88, 96) sts.

Work even in St st until piece measures 20 (23, 25.5) cm/8 (9, 10) ins from cast-on edge, ending with WS row.

Next row. RS: Knit 20 (22, 24) sts, M1, knit to last 20 (22, 24) sts, M1, knit to end.

Work 3 rows St st.

Rep last 4 rows 4 more times.

90 (98, 106) sts.

Work even in St st until piece measures 33 (35.5, 38) cm/13 (14, 15) ins from beg, ending with a WS row.

Armhole Shaping

Continuing in St st, cast off 3 (3, 4) sts at beg of next 2 rows.

Next row: K1, ssk, knit to last 3 sts, k2tog, k1.

Following row: Purl.

Repeat these last 2 rows 2 (3, 4) more times.

Cont. in St st until armhole measures 14 (16.5, 18) cm/ 5½ (6½, 7) ins from beg of shaping, ending with WS row. 78 (84, 88) sts.

Neck shaping: Knit 20 (22, 24) sts, cast off next 38 (40, 40) sts, knit 20 (22, 24) sts.

The sides of the neck will be worked separately from here.

Left Neck

Next row (WS): Purl

Following row (RS): K1, ssk, k to end of row.

Repeat last 2 rows once more.

18 (20, 22) sts rem.

Purl one row and cast off.

Right Neck

Rejoin yarn at neck edge.

Next row (WS): Purl.

Following row (RS): Knit 17 (19, 21) sts, k2tog, k1.

Repeat last 2 rows once more.

18 (20, 22) sts rem.

Purl one row and cast off.

FRONT

Work as for back until piece measures 37 (42, 45.5) cm/14½ (16½, 18) ins, from beg, ending with a WS row.

Neck shaping: K 28 (30, 32) sts, cast off next 22 (24, 24) sts, knit 28 (30, 32) sts.

The sides of the neck will be worked separately.

Right neck

Next row (WS): Purl.

Next row (RS): Cast off 3 sts, knit to end.

Next row (WS): Purl.

Next row (RS): Cast off 2 sts, knit to end.

Next row (WS): Purl.

Next row (RS): K1, k2tog, knit to end of row

Following row (WS): Purl.

Repeat these last 2 rows 4 times more. 18 (20, 22) sts rem.

Work even in St st until piece measures 48 (53, 57) cm/19 (21, 22½) ins from beg, ending with a WS row. Cast off.

Left neck

Rejoin yarn at side edge.

Next row (RS): Knit.

Next row (WS): Cast off 3 sts, purl to end.

Next row (RS): Knit.

Next row (WS): Cast off 2 sts, purl to end.

Next row (RS): Knit to last 3 sts, ssk, k1. Following row (WS): Purl.

Repeat these last 2 rows 4 times more. 18 (20, 22) sts rem.

Work even in St st until piece measures 48 (53, 57) cm/19 (21, 22½) ins from beg, ending with a WS row. Cast off.

SLEEVES

Make two.

With smaller needles cast on 74 (78, 82) sts.

First 3 rows: knit.

Work 2 rows in seed st.

Sleeve Cap Shaping

Continuing to work in Seed st, cast off 3 (3, 4) sts at beg of next 2 rows.

Next row (RS): Ssk, patt to last 2 sts, k2tog.

Following row (WS): Work even
Repeat these last 2 rows 14 times more. 38 (42, 44) sts.

Work 2 rows even

Next row (RS): Ssk, patt to last 2 sts, k2tog.

Following row (WS): Work even
Repeat these last 4 rows 0 (2, 3) times more. 36 sts rem.

Cast off 2 sts at beg of next 2 rows.
Cast off 3 sts at beg of next 2 rows.
Cast off 4 sts at beg of next 2 rows.
18 sts rem. Cast off.

NECKBAND

Sew right shoulder seam.

With smaller needles, beg at left front neck edge and pick up 94 (96, 96) sts around front neck edge, and 48 (50, 50) sts around back neck edge. 142 (146, 146) sts total.

Work 8 rows of seed stitch pattern.
Knit 2 rows, then cast off.

FINISHING

Sew left neck and shoulder seam.
Set in sleeve caps. Sew side and sleeve seams. Block lightly to finished measurements.

